

A PLAT OF MARTIN DOWNS VILLAGE CENTER

BEING PLAT NO. 12 OF MARTIN DOWNS, A P.U.D.
LYING IN SECTION 13, TWP 38 S., RGE. 40 E.
MARTIN COUNTY, FLORIDA

I, LOUISE V. ISAACS, CLERK OF THE CIRCUIT COURT OF MARTIN COUNTY, FLORIDA, HEREBY CERTIFY THAT THIS PLAT WAS FILED FOR RECORD IN PLAT BOOK 9, PAGE 88, MARTIN COUNTY, FLORIDA, PUBLIC RECORDS, THIS DAY OF _____, 1984.

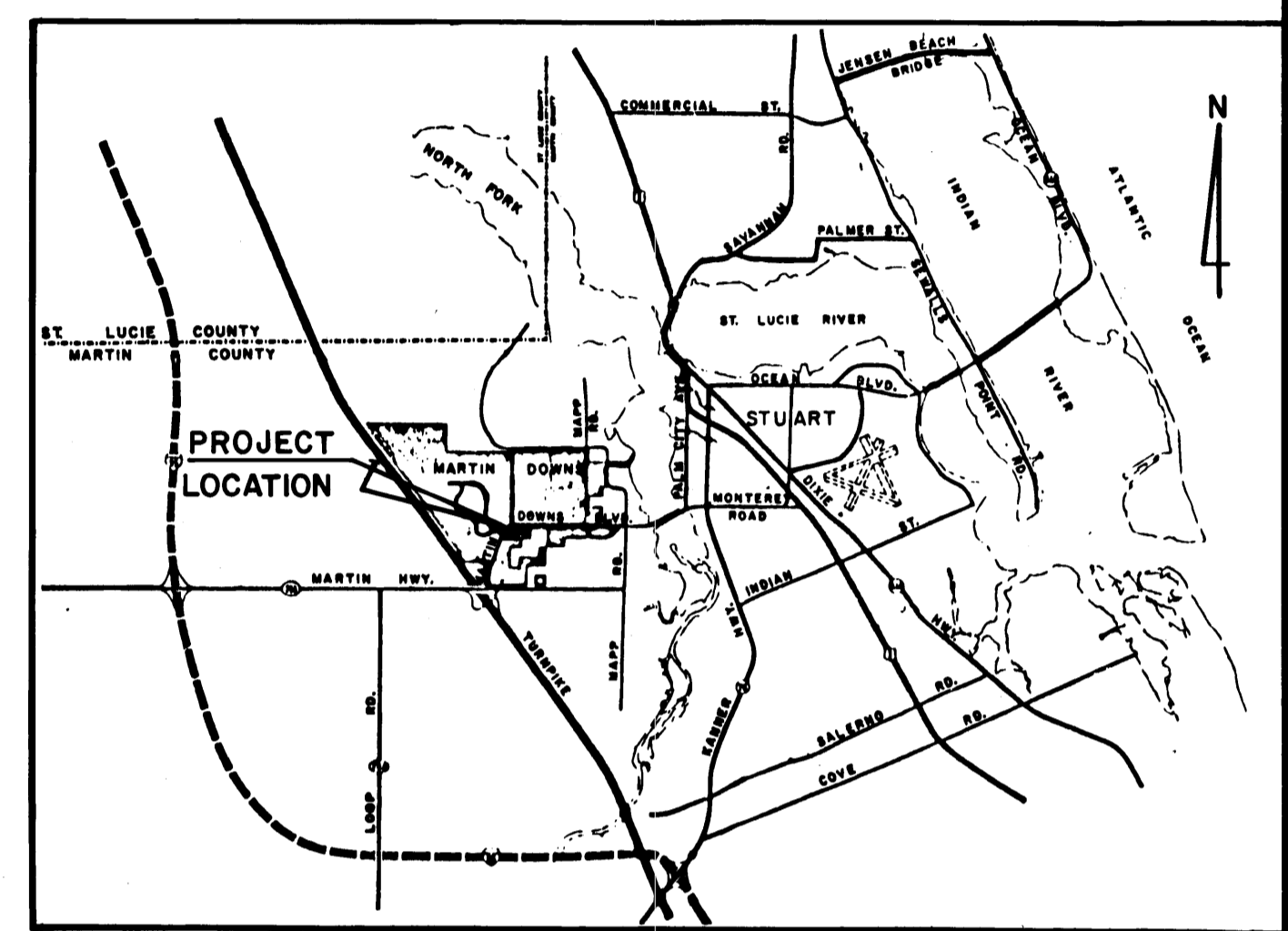
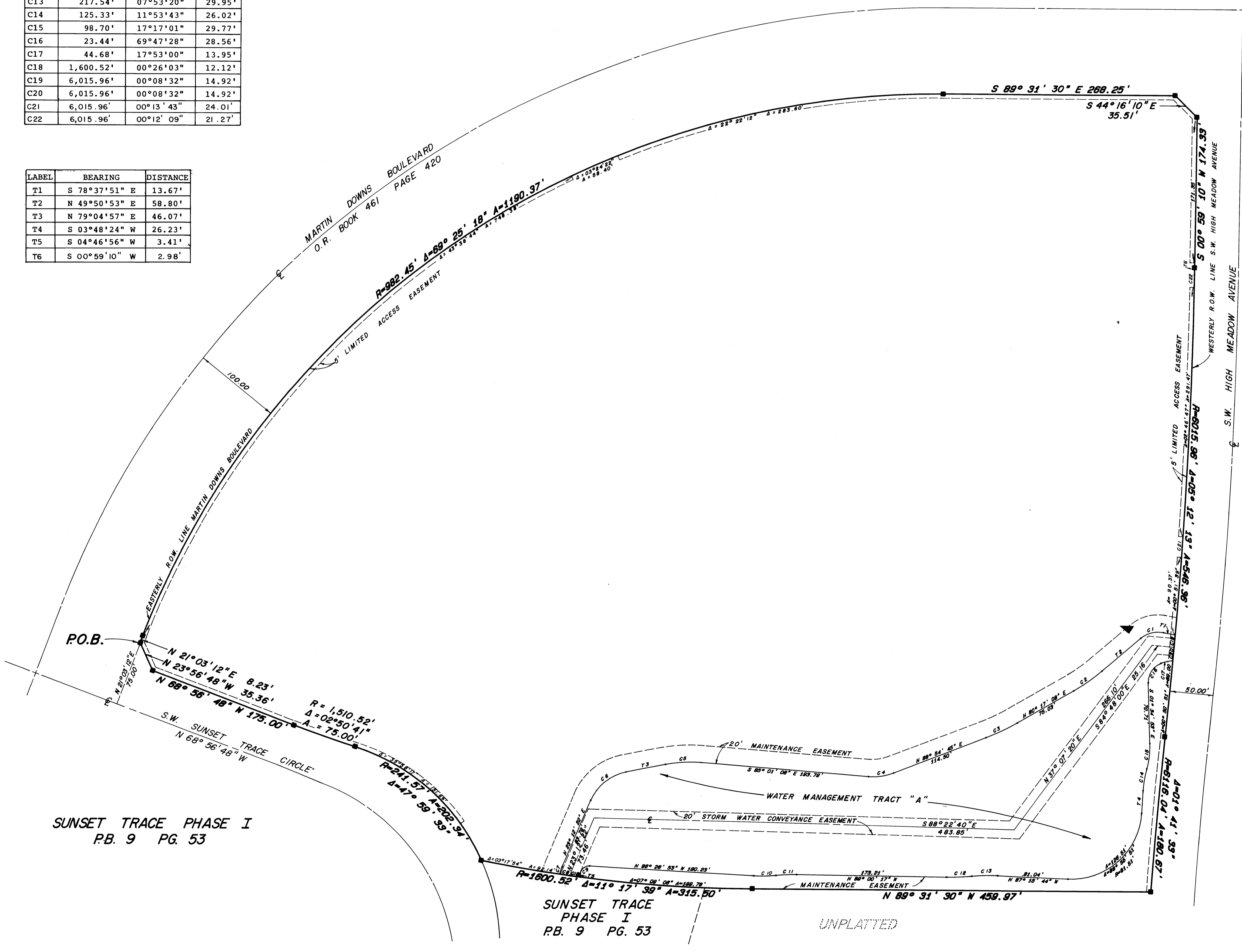
LOUISE V. ISAACS, CLERK
CIRCUIT COURT
MARTIN COUNTY, FLORIDA

BY: _____
FILE NO. _____

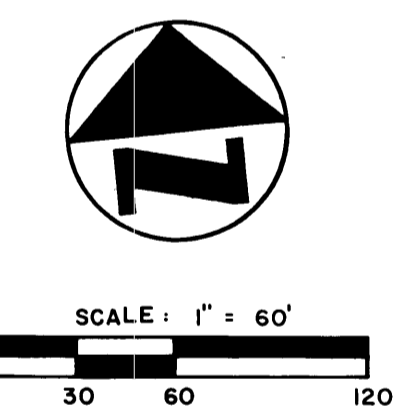
SHEET 2 OF 2

LABEL	RADIUS	DELTA	ARC
C1	31.09'	51°31'17"	27.95'
C2	218.97'	10°26'15"	39.89'
C3	265.16'	08°37'37"	39.92'
C4	64.79'	26°04'07"	29.48'
C5	150.00'	15°53'55"	41.62'
C6	56.57'	55°52'35"	55.17'
C7	53.12'	09°25'12"	8.73'
C8	1,600.52'	00°24'37"	11.46'
C9	10.22'	88°46'12"	15.83'
C10	163.65'	08°57'25"	25.58'
C11	214.63'	06°24'00"	23.98'
C12	270.93'	06°08'47"	29.06'
C13	217.54'	07°53'20"	29.95'
C14	125.33'	11°53'43"	26.02'
C15	98.70'	17°17'01"	29.77'
C16	23.44'	69°47'28"	28.56'
C17	44.68'	17°53'00"	13.95'
C18	1,600.52'	00°26'03"	12.12'
C19	6,015.96'	00°08'32"	14.92'
C20	6,015.96'	00°08'32"	14.92'
C21	6,015.96'	00°13'43"	24.01'
C22	6,015.96'	00°12'09"	21.27'

LABEL	BEARING	DISTANCE
T1	S 78°37'51" E	13.67'
T2	N 49°50'53" E	58.80'
T3	N 79°04'57" E	46.07'
T4	S 03°48'24" W	26.23'
T5	S 04°46'56" W	3.41'
T6	S 00°59'10" W	2.98'



VICINITY MAP



LEGEND

■ P.R.M. (PERMANENT REFERENCE MONUMENT)

BENCHMARK IS LOCATED APPROXIMATELY 658 L.F. SOUTH OF SUNSET TRACE CIRCLE AND MARTIN DOWNS BLVD. INTERSECTION AT A P.K. IN CENTER LINE OF SUNSET TRAIL AND MARTIN DOWNS BLVD. INTERSECTION EL. = 20.38.

BEARING BASE - THE CENTERLINE OF S.W. SUNSET TRACE CIRCLE IS TAKEN TO BE N 68°56'48" W AND ALL OTHER BEARINGS ARE RELATIVE THERETO.

SUNSET TRACE PHASE I
PB. 9 PG. 53

SUNSET TRACE
PHASE I
PB. 9 PG. 53

UNPLATTED

LINDAHL, BROWNING, FERRARI & HELLSTROM, INC.
Consulting Engineers, Planners & Surveyors
JUPITER, FLORIDA STUART, FLORIDA
FORT PIERCE, FLORIDA

2 2